

# SMARTCORDER<sup>®</sup> DDX-100



*Portable, Rugged, All-in-One Data Acquisition*



## **AstroNova Test & Measurement**

### **Capture Critical Data Accurately & Reliably**

Since 1969, AstroNova Test & Measurement has been a pioneer in the data acquisition industry. Building a strong legacy with our high quality, U.S. made products; our customers have come to rely on us for all their data recording requirements.

As engineers, we understand the importance of your data capture applications, which is why we design our products with both precision and user experience in mind. Through the years, we have developed a reputation for our accurate, turnkey products and unrivaled technical support engineers, known for providing expert support whenever it is needed.

Our company is committed to innovation and adaptation, ensuring we meet the ever-changing needs of our customers. Our customers know they can look to us for products that offer revolutionary solutions for data acquisition. Whatever our customers' data acquisition requirements, we offer the total solution for their tailored applications.



## Product Overview

The SmartCorder® DDX-100 is a compact, lightweight and extremely portable all-in-one data acquisition system.

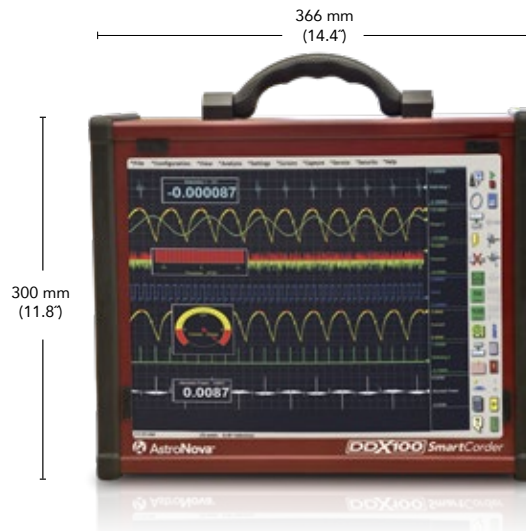
As the successor to the Dash series, the DDX-100 includes everything needed to acquire, analyze and store data in one device. Weighing just 18.5 lbs. (8.6kg), it is AstroNova's lightest all-in-one system.

With the DDX-100, users can capture up to 48 channels and record weeks or even months of data at a time. For higher channel count applications, the DDX-100 can be combined with Daxus data distributed data acquisition systems to record hundreds of channels of synchronized data.

The DDX-100 comes complete with intuitive software, making it easy for users to get up and running quickly. The on-board signal processing allows for real-time calculations, giving users the opportunity to save time and make decisions faster.

Equipped with the IHVM-4P input module, the DDX-100 is ideal for power quality measurements and is capable of performing 16 power measurements using only 4 inputs.

*SmartCorder DDX-100 can be configured to measure 8 channels of "Universal" signals including Voltage (250 VRMS or DC), Thermocouple, DC Bridge, RTD and IEPE Accelerometer inputs. High Voltage (600 VRMS or DC) or up to 32 channels of 40 VFS are also available.*







## Product Highlights

- Gain an all-in-one solution with everything needed to portably acquire and analyze data
- Effortlessly operate with intuitive touch panel interface and easy-to-use software
- Acquire data at speeds up to 200kS/sec/ch (input module dependent)
- Utilize ample storage with a 500 GB hard drive standard or up to 1.6 TB solid state drive
- Obtain multiple sampling rates per channel for long term trending (up to 48 channels)
- Perform single and three phase power measurements with the IHVM-4P
- Use the UNIV-4 universal input module to acquire voltage, DC bridge, thermo couple, RTD, and IEPE sensors



## Setup

**Customize the Control Panel** to create one-touch icons for common menu items and test setups.

**Setup Files** make it easy to store and recall common test configurations. Users can also create setup files on a PC and transfer them to the SmartCorder DDX-100 with the optional DDX Offline Software.



## Acquire

The DDX-100 features two slots that accept a variety of input modules. Each system can acquire up to 48 channels with sampling rates up to 200 kS/s per channel or as low as 0.01 samples per second for long term monitoring. The number of channels is expandable to 480 using AstroNova's Daxus distributed data acquisition platform, and all inputs can be synchronized by sharing clock signals or via GPS or IRIG<sup>1</sup>.

The DDX-100 supports three different sampling rates per channel which allows users to acquire high speed and low speed data simultaneously, reducing file sizes.

With the ability to create intelligent triggers to start and stop recording based on any input channel, event (e.g. external trigger signal), or specific date and time, users are able to record only the data they want. Pre and post trigger buffer sizes are configurable and triggers can be set to automatically re-arm for capturing multiple events. The trigger key on the front panel also offers the option to trigger data captures manually.

The **Utility/DIO port** contains alarm outputs and inputs as well as programmable outputs and inputs for external sample clocks, eliminating the need for a separate digital I/O module. Optional interfaces include IRIG for synchronizing data across multiple units, GPS for time and location, and CAN (up to 16 channels). Selecting these options does not require users to surrender a slot for input modules.

The **NIDX-16 module** provides two analog outputs for powering transducers or generating waveforms to stimulate a unit under test. Users can output standard waveforms such as sine waves, square waves or user-defined custom waveforms. The optional breakout box provides two additional analog outputs.

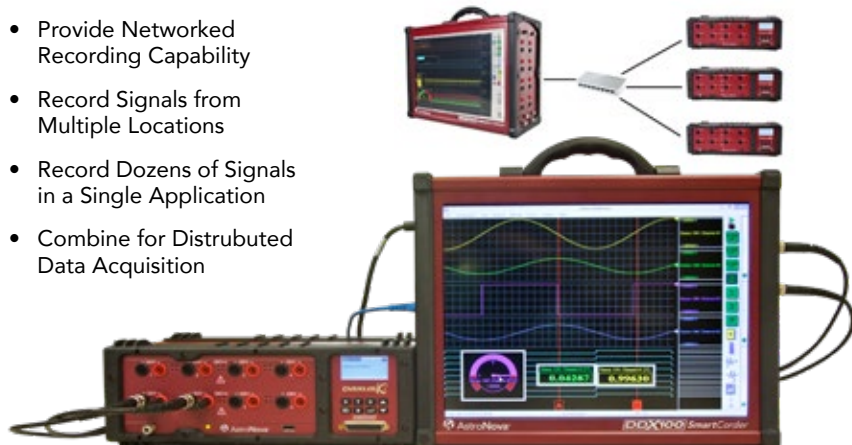
With the **UNIV-4 universal input module**, users are able to reduce testing costs and increase flexibility. The UNIV-4 alleviates the need for dedicated modules, allowing users to perform voltage, DC bridge, thermocouple, RTD, and IEPE sensor measurements in a single module.

1. Requires optional IRIG interface DAX-IR/GPS

## SmartCorder DDX-100 Expandable for Increased Capability

The Daxus family of data acquisition systems is designed for compatibility. SmartCorder DDX-100 and Daxus easily integrate to:

- Increase Channel Counts
- Provide Networked Recording Capability
- Record Signals from Multiple Locations
- Record Dozens of Signals in a Single Application
- Combine for Distributed Data Acquisition

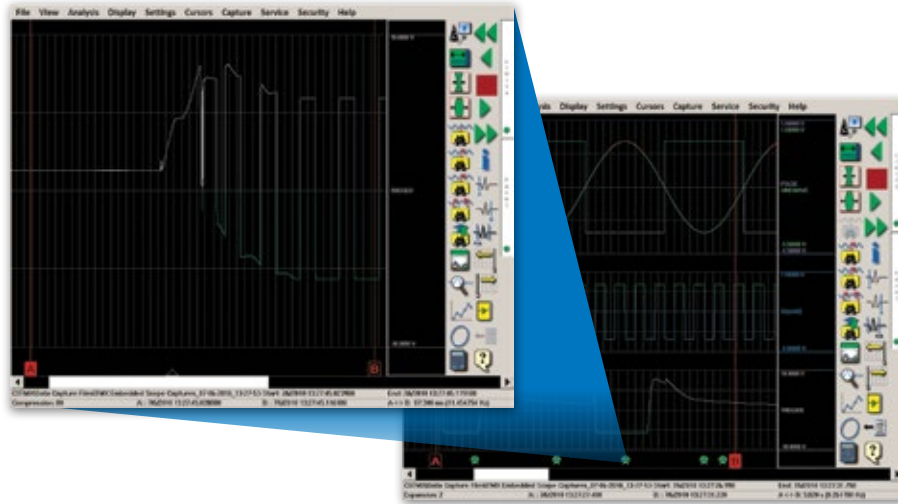




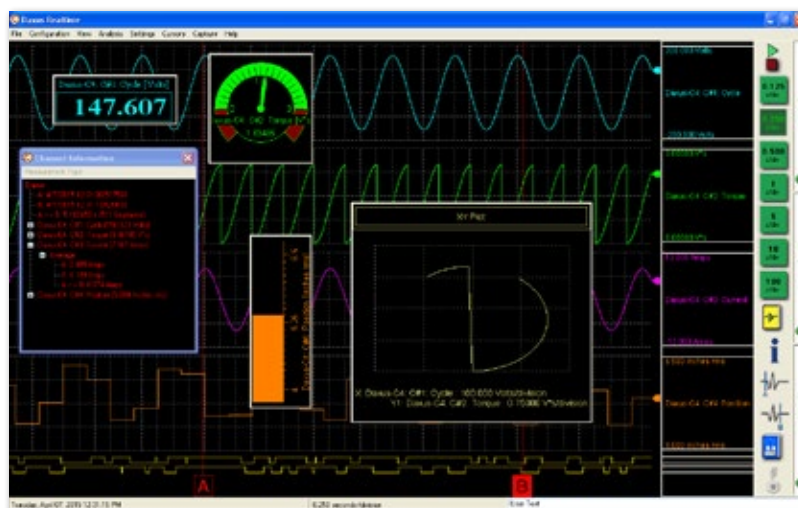
## Visualize

The DDX-100 comes equipped with our easy-to-use DDX **application software**, which allows users to configure systems, view data in real-time, and review saved data. With this software, reviewing or transferring data during a capture will not interrupt the current acquisition.

The powerful **scope mode** feature allows users to acquire and save data at low sample rates while capturing high speed snapshots based on user-defined triggers. This feature is particularly useful for capturing intermittent signals or analyzing the timing between signals. Icons on the real-time display indicate when a scope capture has occurred and trigger events are embedded in the data file. High speed data from scope captures is saved in separate files and can be viewed in a scope display with high time-base resolution and cursor measurements without interrupting long term trending.



**Channel meters** allow users to view any channel as a digital readout, bar meter, moving needle, or analog gauge, making it easy to view current values at a glance. Users are able to visualize the relationships between inputs by plotting them in **XY plots**. Channel meters and **XY plots** can be sized and placed anywhere on the display for easy viewing.





## Analyze

The DDX-100 provides powerful tools to help users analyze data quickly and easily. The built-in digital signal processing (DSP) capabilities allow users to create derived channels, apply custom filters, and perform frequency or counter measurements on a per-channel basis.

The **derived channel** feature provides users with the ability to create calculated channels based on user-defined equations and up to four input channels. Derived channels are calculated in real-time and can be displayed and recorded along with the original input channels in real-time or review mode.

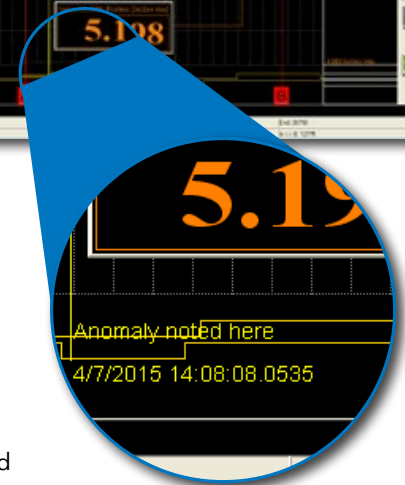
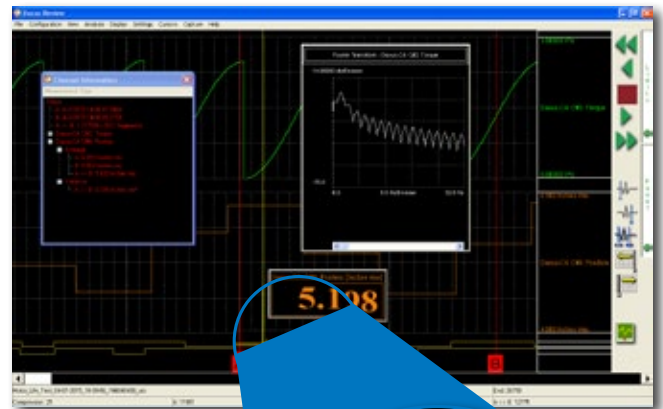
To aid in analyzing acquired data, **cursors** provide built-in measurements such as average, Min-Max, Peak-Peak, slope, RMS, Sum, Std Deviation, and more. Users can also configure **Fourier Transform windows** for viewing and analyzing frequency content.

**Advanced counter and timing functions** provide common frequency measurements and eliminate the need for a separate counter/timer module, regardless of the input module type. Available functions include frequency, duty cycle, edge separation, quadrature encoder, gated pulse counter, pulse width, and more.

**User Notes** can also be added during an acquisition and are saved as part of the data file for review.

**Data Review** allows users to review captured data while still recording. The user-defined cursors offer the option to perform measurements in real-time, scope and review modes. Select from standard measurements including average, Min-Max, Peak-to-Peak, Slope, RMS, and others.

Users can review data on their PC using the optional DDX Offline Software, with the option to extend and automate analysis and control functions using Python scripting and LabVIEW.



## Store

With all data stored locally on an internal hard drive, users have the option to choose from a 500GB hard disk drive (standard) or up to a 1.6 TB optional solid state (recommended).

The DDX-100 comes with a built-in **Li-ion battery** that automatically charges when the system is connected to power and provides backup power for continued operation (45 minutes typical) with no loss of data.

Storing derived channels, events and notations, along with measurement data, users can easily reduce post-processing and recall important events. Using the included application software, users are also able to export only the channels or time frame selected to ASCII.

AstroNova provides free **AstroVIEW X software** for viewing data from any AstroNova data acquisition system on a PC with the option to export to other common file formats.



## Print

The SmartCorder DDX-100 software enables users to print data to a PDF file in real-time, scope, or review modes.



## Configure Your System

### Step 1: Choose your system

| System  | Part Number  | Description  |
|---------|--------------|--|
| DDX-100 | PN: 42960100 | Multi-Channel Data Acquisition System Chassis accepts up to two Input Modules (Windows 10) |

### Step 2: Choose your input modules

Each DDX-100 features two (2) slots for signal input modules. To configure the DDX-100 system, select from the input modules below.



#### ISEV-4

P/N: 32950605

4-Ch Isolated Voltage Module accepts up to 250 Vrms or VDC (Cat II)



#### UNIV-4

P/N: 32950600

4-Ch Universal Module for Voltage, DC Bridge, Thermocouple, RTD, and IEPE transducers. Accepts up to 250 Vrms or DC (Cat II)



#### NIDX-16

P/N: 32950620

16-Ch Non-isolated Differential Voltage Input Module accepts up to 30 Vrms or 40 VDC. Two Analog Outputs. Screw terminal or BNC connections with adaptor



#### IHVM-4

P/N: 32950630

4-Ch High Voltage Module accepts up to 600 Vrms or DC (Cat III) or 1,000 Vrms or DC (Cat II) to "4-Ch High Voltage Module accepts up to 600 Vrms or DC (Cat III) or 1,000 VDC (Cat II)



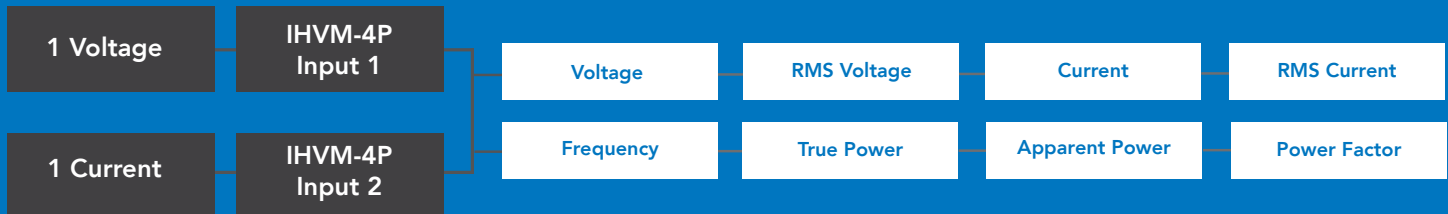
#### IHVM-4P

P/N: 3295063

4-Ch Isolated High Voltage Module accepts up to 600 Vrms or DC (Cat III) or 1,000 VDC (Cat II) with 16 selectable measurements including power quality" to "4-Ch Isolated High Voltage Module accepts up to 600 Vrms or 1000 VDC (Cat III) or 1,000 Vrms or DC (Cat II) with 16 selectable measurements including power quality

## Power Measurements with the IHVM-4P

Acquire eight power quality measurements with only one pair of voltage and current signal inputs.





### Step 3: Choose your Options and Accessories

| Part Number        | Description  | Model    |
|--------------------|--|----------|
| Options            |  |          |
| DDX-SSD400         | Optional Solid-State Drive (SSD) Upgrade, 400 GB Capture Drive & 400 GB System Drive   | 41284004 |
| DDX-SSD800         | Optional Solid-State Drive (SSD) Upgrade, 800 GB Capture Drive & 400 GB System Drive   | 41284008 |
| DDX-SSD1600        | Optional Solid-State Drive (SSD) Upgrade, 1.6 TB Capture Drive & 400 GB System Drive   | 41284016 |
| DAX-IR/GPS         | IRIG Decoding Option supports IRIG A, B, E, G, NASA 36 time codes with GPS location and timing   | 42662100 |
| DAX-CAN/GPS        | CAN Bus interface to view and record CAN Bus data and other analog signals with GPS location and timing  | 42662200 |
| DAX-OCBB           | Options Card Breakout Box provides two analog outputs, two relays, two CAN BUS ports, one IRIG input and two general purpose I/O's via the GPS/CAN/IRIG interface above (15-pin D-Sub connection included) | 32930000 |
| DAX-WIFI           | Wireless USB Adaptor   | 27537000 |
| DAX-ANT            | GPS Antenna  | 27535000 |
| Software           |  |          |
| DDX-SW             | DDX-100 SMARTCORDER Offline Software   | 14004912 |
| DDX-SWSL           | DDX-100 SMARTCORDER Offline Software Site License (5 Users)  | 14004930 |
| FDAS               | FlexPro 9 Data Analysis Software (Standard Edition)  | 14180100 |
| FDAS-PRO           | FlexPro 9 Data Analysis Software (Professional Edition)  | 14180200 |
| Service            |  |          |
| EW-DDX             | 12-Month Extended Warranty with Quick-Swap Loaner  | EW-DDX   |
| Cases              |  |          |
| SC-DDX             | Soft Carry Case for DDX-100 SMARTCORDER  | 41047200 |
| HC-DDX             | Hard Pelican Carry Case for DDX-100 SMARTCORDER  | 41047220 |
| Lead Sets & Probes |  |          |
| GL-40              | General Use Lead Set contains 2 each — probe handles, right angle to straight plug test lead, test clips, and medium alligator clips (1 red, 1 black)  | 13442000 |
| LC-40              | Test Leads/Clips pair of test leads and pincer clips (1 red, 1 black)  | 13441003 |
| LC-40S             | Test Leads/Spades pair of test leads with spade connector for # 8 screw  | 13441201 |
| CLM-420A           | 4 to 20 mA Current Loop Adaptor for current loop measurements  | 26487100 |
| SL261              | Current Probe reads AC or DC current, 100 A maximum  | 24661201 |
| MR411              | Current Probe reads AC or DC current, 600 A maximum  | 24661200 |
| MR521              | Current Probe reads AC or DC current, 1500 A maximum   | 24661100 |
| MN255              | Current Probe reads AC current, 240 A maximum  | 24661300 |
| SR759              | Current Probe reads AC current, 1200 A maximum   | 24661400 |
| JM875              | Current Probe reads AC current, 3000 A maximum   | 24661500 |
| FP300A             | Flexible Current Probe reads AC current, 300 A maximum   | 24661600 |
| FP3000A            | Flexible Current Probe reads AC current, 3000 A maximum  | 24661700 |
| FP6000A            | Flexible Current Probe reads AC current, 6000 A maximum  | 24661620 |
| ADP-4810           | High Voltage Probe reads up to 1000 Vrms or 1400 VDC   | 25765000 |
| BNC-BAN-I          | Connector insulated Female BNC to standard insulated double banana plug  | 10532211 |
| CABLE-BNC          | Cable, Male BNC to Male BNC, 12" (30.5 cm) length  | 12360007 |



## SmartCorder® DDX-100 System Specifications

| System                 |   |
|------------------------|---|
| Display                | 15" touch panel with 1024x768 resolution  |
| Connectivity           | Gigabit Ethernet (10/100/1000Base-T), Wi-Fi optional  |
| I/O Module Slots       | 2 (4-16 Channels per module)  |
| Data Acquisition       |   |
| Channels               | Up to 32 (2 input modules) or 48 (with 16 CAN inputs3), expandable to 128   |
| Maximum Sample Rate    | 200,000 S/sec/channel   |
| Minimum Sample Rate    | 1 sample every 100 seconds  |
| Multiple Sample Rates  | Yes, up to 3 different rates with simultaneous capture  |
| Total Capacity         | 500 GB standard (400GB, 800GB, & 1.6TB SSD optional)  |
| Time Stamp             | Time & Date stamps stored with data   |
| Alarms                 | Yes, low and high per channel   |
| Events                 | Recorded with data  |
| Filters                | Low pass, high pass, bandpass, band stop, RMS   |
| Modes                  | Capture and Scope   |
| Triggering             | One-shot, Triggered One-Shot, Continuous, Continuous Triggered, Periodic, and Time  |
| Trigger logic          | Trigger and Abort, AND/OR combinations  |
| Pre-Trigger            | 1 to 100% of capture  |
| Auto Re-Arm            | Yes   |
| Advanced DSP Functions |   |
| Math functions         | Addition, Subtraction, Multiplication, Division, Trigonometric, Statistics, RMS, Differentiation, Integration, and other general math functions   |
| Derived Channels       | Up to 6 based on 4 signal inputs  |
| Optional Interfaces    |   |
| GPS                    | Time synchronization and location   |
| IRIG                   | IRIG A and B for time synchronization   |
| CAN                    | Support for CAN signal acquisition, 2 ports (13 channels when GPS and/or IRIG options purchased or 16 when neither GPS or IRIG options purchased) |

| Power                                |  |
|--------------------------------------|--|
| Input Voltage                        | 100-240 VAC, 50/60 Hz (47 Hz to 63 Hz)                   |
| Power Consumption                    | 120 Watt Max. (90 Watt typical)                          |
| Internal Battery                     |  |
| Type                                 | Li-Ion (rechargeable)                                    |
| Charge Time                          | 4 hours  |
| Battery Life                         | Up to 1 hour on a single charge (45 minutes typical)     |
| Physical                             |  |
| Dimensions (inches)                  | 11.8" H x 14.4" W x 6.6" D (300mm H x 366mm W x 168mm D) |
| Weight                               | 18.5 lbs. (8.4 kg) including signal input modules        |
| Environmental                        |  |
| Operating Temp                       | 32°F to 104°F (0 to 40°C)                                |
| Operating Humidity                   | 10% to 90% non-condensing                                |
| Shock                                | MIL-810-F Method 516.5, Procedure I*                     |
| Vibration                            | MIL-810-F Method 514.5, Procedure I*                     |
| * With solid state drive option      |  |
| 3 with the GPS/IRIG/CAN options card |  |



## SmartCorder® DDX-100 Input Module Specifications

| UNIV-4                           |   |
|----------------------------------|---|
| UNIV-4 Common Specifications     |   |
| Connector Type                   | Guarded banana jacks, 8-wire screw terminal   |
| A/D resolution                   | 16-bit  |
| Measurement range (single-ended) | 0.1V to 250V  |
| Measurement range (differential) | 2mV to 1V   |
| DC Accuracy                      | +/- 0.06% of attenuator   |
| Channels Per Module              | 4   |
| Rated Isolation                  | 250 VRMS or DC, Cat II (iso-common to chassis and other iso-commons)  |
| UNIV-4 Single Ended Input        |   |
| Input                            | Single-ended, AC/DC coupled   |
| Sample Rate                      | 200 KHz   |
| Bandwidth                        | 40 KHz (-3dB) (400V, 200V and 100V Attenuators)<br>35 KHz (-3dB) (10V and 1V attenuators)   |
| UNIV-4 Differential Input        |   |
| Input                            | Differential, DC coupled  |
| Sample Rate                      | 200 KHz   |
| Bandwidth                        | 35 KHz  |
| NIDX-16 Specifications           |   |
| Connector Type                   | Guarded banana jacks  |
| A/D resolution                   | 16-bit  |
| Measurement ranges               | 0.1V to 40V   |
| DC Accuracy                      | < 0.12% of attenuator (0.5V attenuator)<br>< 0.10% of attenuator (1V attenuator)<br>< 0.08% of attenuator (5V attenuator)<br>< 0.04% of attenuator (10V, 20V and 40V attenuators) |
| Channels Per Module              | 16  |
| Input                            | Differential, DC coupled  |
| Bandwidth                        | 4 KHz (-3dB)  |
| Sample Rate                      | 20 KHz  |

| ISEV-4 Specifications  |   |
|------------------------|---|
| Connector Type         | Guarded banana jacks  |
| A/D resolution         | 16-bit  |
| Measurement ranges     | 0.1V to 250V  |
| DC Accuracy            | +/- 0.06% of attenuator   |
| Channels Per Module    | 4   |
| Rated Isolation        | 250 VRMS or DC, Cat II (iso-common to chassis and other iso-commons)  |
| Sample Rate            | 200 KHz   |
| Input                  | Single-ended, AC/DC coupled   |
| Bandwidth              | 40 KHz (-3dB)   |
| IHVM-4 Specifications  |   |
| Connector Type         | Guarded banana jacks  |
| A/D resolution         | 16-bit  |
| Measurement ranges     | 1V to 1000VDC or 600Vrms  |
| DC Accuracy            | +/- 0.06% of attenuator   |
| Channels Per Module    | 4   |
| Input                  | Differential, DC coupled  |
| Bandwidth              | 35 KHz (-3dB)   |
| Rated Isolation        | 600 VRMS or DC, Cat III (channel to chassis and other channels)<br>1,000 VRMS or DC, Cat II (channel to chassis and other channels) |
| Sample Rate            | 200 KHz   |
| IHVM-4P Specifications |   |
| Connector Type         | Guarded banana jacks  |
| A/D resolution         | 16-bit  |
| Measurement ranges     | 1V to 1000VDC or 600Vrms  |
| DC Accuracy            | +/- 0.06% of attenuator   |
| Channels Per Module    | 4   |
| Input                  | Differential, DC coupled  |
| Bandwidth              | 14 KHz (-3dB)   |
| Rated Isolation        | 600 VRMS or DC, Cat III (channel to chassis and other channels)<br>1,000 VRMS or DC, Cat II (channel to chassis and other channels) |
| Sample Rate            | 50 KHz  |





## Supported Throughout Your Equipment's Lifetime

### Technical Support

Our worldwide Field Sales Engineer team is available to visit your facility for one-on-one consultation to review your specific application and recommend the correct set-up for your production needs.

Our dedicated Sales and Support Engineers are ready to answer any questions and provide 24/7 support through our intuitive paging system at our facility in the USA, ensuring a response around the clock. To help you get started, AstroNova includes easy-to-use quick start guides with each system. Onsite start-up assistance is also available upon request.

### Repair

If needed, AstroNova is prepared to repair your equipment. Our return process makes repairs quick and simple. Upon arrival of your device, your feedback will be reviewed, device examined and a recommended course of action will be determined. During the repair process, a device can be loaned to keep you up and running.

### Upgrade

AstroNova is continuously evolving. By innovating and enhancing devices, we allow you to do more and perform better. In doing so, we give you a chance to be a part of technology evolution and upgrade your equipment. Whether it is hardware or software, we will ensure your devices remain current to meet your ever-changing requirements.

### Warranty

AstroNova Test & Measurement equipment is covered by a one-year warranty on all parts and labor. An extended warranty is also available for an additional fee.

### Lease

Capital expense budget not available? We have you covered. AstroNova Test & Measurement collaborates with a leasing company allowing you to lease the devices you need to get started now. Get underway with a low down payment and reasonable monthly fee.

*AFTER 25 YEARS OF USE, I CONSIDER ASTRONOVA'S DASH 8X MODEL ONE OF THE BEST BUILT PIECES OF EQUIPMENT I'VE EVER SEEN.*

***I WISH EVERYTHING WE BOUGHT WAS ENGINEERED TO LAST LIKE THIS...***

*WE'D NOT BE WORKING ON SO MANY BROKEN PROJECTS IN LIFE."*

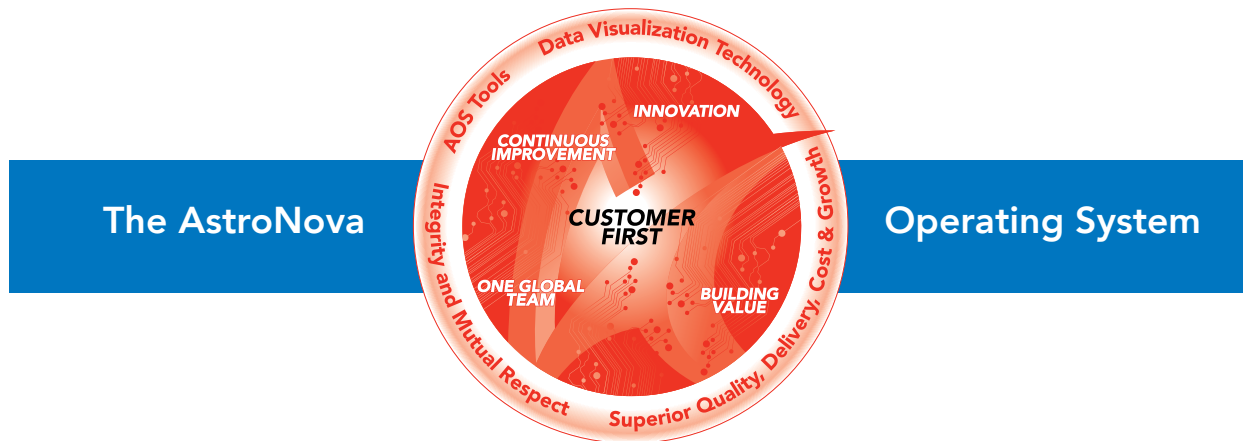
TEST ENGINEER, FORTUNE 500 CHEMICAL COMPANY




# AstroNova® Test & Measurement

## Why Choose AstroNova Test & Measurement?


- Innovative** AstroNova (formerly Astro-Med) has been developing innovative Test & Measurement products since 1969.
- Easy-To-Use** Designed with the user in mind from firmware to software, our all-in-one data acquisition systems are easy to use, saving time and money.
- Reliability** Constructed for durability and portability, our products are rugged and ideal for mobile use over time.
- Flexibility** Our systems support a wide variety of sensors. Universal input modules reduce the cost of testing by providing the flexibility to connect multiple sensor types to a single module.
- Commitment** We value our customers and are committed to providing total satisfaction. Our technical support engineers are located at our facility in the USA and around the world with on-site training and startup assistance is available.
- Collaboration** Our approach is partnering with our customers to understand their needs and propose solutions based on their unique challenges.



## Other Data Acquisition Products Available from AstroNova



**Real-Chart RC-300** provides high resolution, real time, wide format printed charts for up to 32 channels of data. Real-Chart works with TMX® or as a standalone network printer with digital data via ethernet.



**Daxus® DX-100** is an ideal solution for distributed and rugged data acquisition with or without a PC. Multiple units can be stacked or networked for high channel count applications.



**TMX®** is an all-in-one data acquisition system providing an unmatched combination of features, ruggedness and ease-of-use. Durable in all environments.

## AstroNova Worldwide Presence

### World Headquarters

600 East Greenwich Ave.  
West Warwick, RI 02893 USA  
Toll-Free: 877-867-9783  
Tel: +1 401 828-4000  
daq@astronovainc.com  
tm.astronovainc.com

### China

Part D, Building No. 3 Plot Section  
No. 81 Meiyue Road  
Pilot Free Trade Zone  
(Shanghai) 200131  
Tel: +86 21 5868 3687  
tm.astronovainc.cn

### EMEA Headquarters

Waldstrasse 70  
63128 Dietzenbach  
Deutschland  
Tel: +49 (0) 6074-31025-00  
tm.astronovainc.de