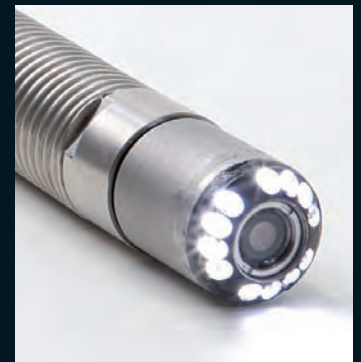
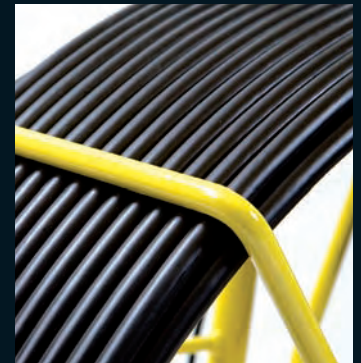
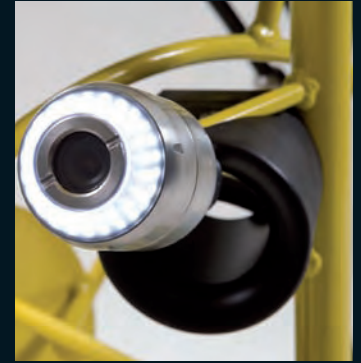


P330+ flexiprobe



Advanced **performance.**
Ultimate **control.**

DIGITAL VIDEO

Digital pan and zoom to focus in on problem areas.



Rotate images to make them easier to interpret.



Video is recorded onto durable Compact Flash cards.



ONE-TOUCH RECORDING AND STILL PICTURE CAPTURE

Record video and capture still pictures with a single keypress on the tough keypad.



CONNECTIVITY

Video can be transferred directly to PC or laptop with the included USB cable.

Still pictures can be transferred via *Bluetooth*® wireless technology.

INTEGRATED EASY-REPORT WRITER

Quickly compile annotated inspection reports on site – and view and edit them on a PC or laptop.



P330+ flexiprobe

Advanced performance. Ultimate control.

P330+ flexiprobe push rod inspection systems set the standard in pipeline inspection.

Combining the fully-featured P330+ flexiprobe Controller with high performance durable cameras and a full range of rods and accessories, P330+ flexiprobe systems are designed for a wide range of video inspection situations; from residential and small commercial uses to specialist plant and municipal applications.

At the heart of each system is the advanced P330+ flexiprobe Controller, which displays video footage in digital quality full color VGA on an ultra-bright 8" (200mm) industrial TFT screen. Digital technology provides simple access to the advanced features of the Controller, putting you in complete control via an intuitive user interface and tough keypad, operable even when using gloves.

One-touch recording and still picture capture

Recording video is simple. A single press on the keypad allows you to record in full VGA high quality digital video. Capture still pictures during your inspection with a press of the camera icon on the keypad.

Audio commentary can be added to your recordings via the supplied microphone headset, and text comments included using the splashproof keyboard. The integral rod counter displays distance traveled in pipe on-screen.

Digital video

The P330+ brings you all the benefits of digital video technology. Pause your recording and rotate images to make them easier to interpret. Digital pan and zoom allows you to take a closer look at problem areas. Video is recorded onto solid state, durable Compact Flash cards. A 2GB card is included, and cards of up to 8GB capacity – capable of storing up to 7 hours of high quality video – are supported.

Connectivity

The advanced digital platform of the P330+ means you can conveniently transfer your video to PC or laptop via USB cable. Using *Bluetooth*® wireless technology you can even transfer inspection pictures from the P330+ flexiprobe Controller to compatible mobile phones or laptops, and instantly send them to your customers. This means you can get the authority to proceed with pipeline repairs much faster.

Integrated easy-report writer

The P330+ flexiprobe Controller enables you to compile a comprehensive report on site that incorporates your company logo and includes still pictures, observations and customer details.

When your survey is complete, both your report and video can be viewed and edited on a PC or laptop using the included user-friendly FlexiSight™ software package.

P330+ flexiprobe systems include:

P330+ flexiprobe Controller, push rod with choice of reel (35m (115') Mini reel, 60m (200') or 120m (400') Standard reel; 150m (500') Specialist reel), choice of color camera (1" manual focus or 2" self-leveling fixed focus), keyboard, mains adaptor, 12V car jackplug lead, 2GB Compact Flash Card, microphone headset, FlexiSight™ video editing software, universal flexi (512Hz sonde, US only) and universal brush skid kit. Standard and Specialist systems include Controller mounting clamp.

For inspection professionals who don't need integral video recording capability, flexiprobe Look/See systems feature a Controller with a 6.4" (160mm) TFT screen and the same tough weatherproof construction as the P330+ flexiprobe Controller. Look/See systems include a 512Hz flexi sonde.



BLUETOOTH® WIRELESS TECHNOLOGY (OPTION) TO INSTANTLY SEND INSPECTION PICTURES TO CUSTOMERS VIA MOBILE PHONE

ULTRA-BRIGHT 8" (200mm) TFT SCREEN

COMPACT FLASH CARD SLOT, POWER SOCKET AND CONNECTIVITY FOR USB & VIDEO IN/OUT BEHIND PROTECTIVE COVER

DURABLE KEYPAD FOR EASY ACCESS TO ALL KEY FUNCTIONS
One-touch still picture capture
One-touch record
One-touch digital zoom

SPLASHPROOF KEYBOARD FOR TEXT ENTRY

EASILY TRANSPORTABLE COMPACT REEL

WATERPROOF STAINLESS STEEL/SAPPHIRE CAMERA WITH MAINTENANCE-FREE LED LIGHTING

Each system comes complete with a universal easy-fit brush skid set that allows the 1" camera to be used in pipes from 25mm (1") up to 100mm (4") diameter and the 2" camera to be used in pipes from 50mm (2") up to 150mm (6") diameter. Brushes can be conveniently replaced in seconds.



Specifications

Controllers

	FLEXIPROBE P330+ CONTROLLER	FLEXIPROBE LOOK/SEE CONTROLLER
Screen	8" (200mm) industrial TFT	6.4" (160mm) TFT
Storage	High Speed Compact Flash	
Connectivity	USB, Video in/out, Bluetooth (optional)	Video in/out
Environmental	IP55 (closed) IP53 (open)	IP55 (closed) IP53 (open)
Power supply	IP67 rated for outdoor use	IP67 rated for outdoor use
Dimensions	360 x 360 x 200mm (14" x 14" x 8")	360 x 360 x 200mm (14" x 14" x 8")
Weight	5.5Kg (12lbs)	4.5Kg (10lbs)



Rods and Reels

	MINI REEL	STANDARD REEL	SPECIALIST REEL
Dimensions	570 x 440 x 256mm 22.4" x 17.3" x 10.1"	850 x 750 x 420mm 33.5" x 29.5" x 16.5"	813 x 1168 x 475mm 32.0" x 46.0" x 18.7"
Weight	11kg/24lbs	18.2Kg/40lbs 24.9Kg/55lbs	37Kg/74.2lbs
Construction	Welded steel powder coated		
Rod	35m (115')	60m (200') 120m (400')	150m (500')



FLEXISIGHT™ SOFTWARE INCLUDED

Edit your video footage on a PC or laptop with easy-to-use FlexiSight™ software.

LIGHTWEIGHT CONTROLLER

Weighs only 5.5Kg (12lbs) and incorporates an integrated carry handle for the ultimate in portability.



RUGGED AND WEATHERPROOF

Controller housed in tough structural polypropylene Rated IP 55 when closed and IP 53 when open.



MAINS OR BATTERY POWERED (OPTION)

Use the P330+ flexiprobe system anywhere, however remote the location – even if a mains or vehicle supply is not available.

Cameras

	25mm (1") CAMERA	50mm (2") CAMERA
Dimensions	24 x 39mm 0.94" x 1.54"	48 x 80mm 1.89" x 3.15"
Weight	0.06Kg/0.13lbs	0.38Kg/0.84lbs
Construction	303 stainless steel	303 stainless steel
Power	0.75W	1.90W (max)
Operating Temperature	-10°C to +50°C	-10°C to +50°C
Focal length	20mm to ∞	170mm
Focus	Adjustable	Fixed
Lighting	Maintenance-free LEDs	Maintenance-free LEDs
Image Resolution	628 x 582 PAL 510 x 492 NTSC	752 x 582 PAL 500 x 582 NTSC
S/N ratio	>46dB	>45dB



ULTRA-TOUGH CAMERAS

Stainless steel construction. Bright maintenance-free LEDs ensure a clear picture.



Options

Bluetooth® Module

Allows you to send pictures and reports from your inspection surveys to compatible mobile phones and laptops using Bluetooth® wireless technology.



A RANGE OF RODS TO SUIT YOUR APPLICATION

From 35m for residential and small commercial use right up to 150m for specialist applications.

Sonde and Locator package

The sonde and locator package is the essential tool to pinpoint pipe location and depth. Locate the sonde to a depth of 3m (10') with the SuperC.A.T^S locator.



ACCESSORIES THAT EXTEND YOUR CAPABILITIES

Tailor your system to your needs with a range of solid sondes, flexi sondes, locators and flexis.

Battery Packs

Use the P330+ flexiprobe system anywhere with the high visibility weatherproof, mains-rechargeable Battery Packs. Two models are available: 7Ah (4 hours operation) and 12Ah (8 hours operation). Both are also rechargeable in-vehicle with an optional 12V adaptor.

COMPLETELY MODULAR

All cameras, controllers, rods and accessories are fully interchangeable, giving you the flexibility to expand your system at your pace.

©2007 Pearpoint, Inc. / Radiodetection Ltd. ALL RIGHTS RESERVED.
The Logo and "flexiprobe," are trademarks owned by Radiodetection Ltd.
Due to a policy of continued product development, we reserve the
right to alter or amend any published specification without notice.
Radiodetection Ltd. is a subsidiary of SPX Corporation
To see the full range of products and services
visit: www.pearpoint.nl www.pearpoint.be

